



A.P.A.E. – ASSOCIAÇÃO PORTUGUESA DE ACUPUNCTURA ELÉCTRICA

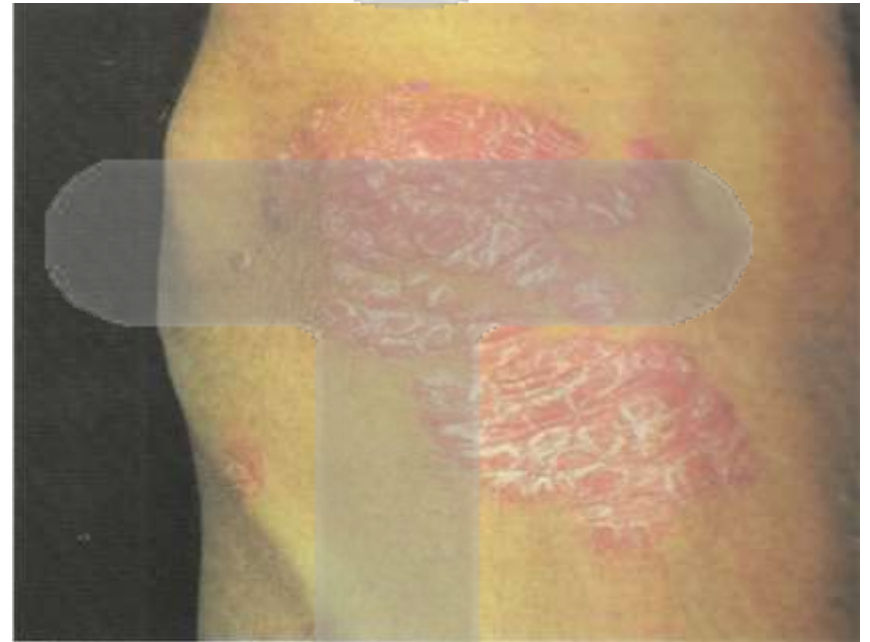
Psoriasis treatment with Electrical Acupuncture

Portuguese Association of Electrical
Acupuncture

Dr. Mitsuharu Tsuchiya



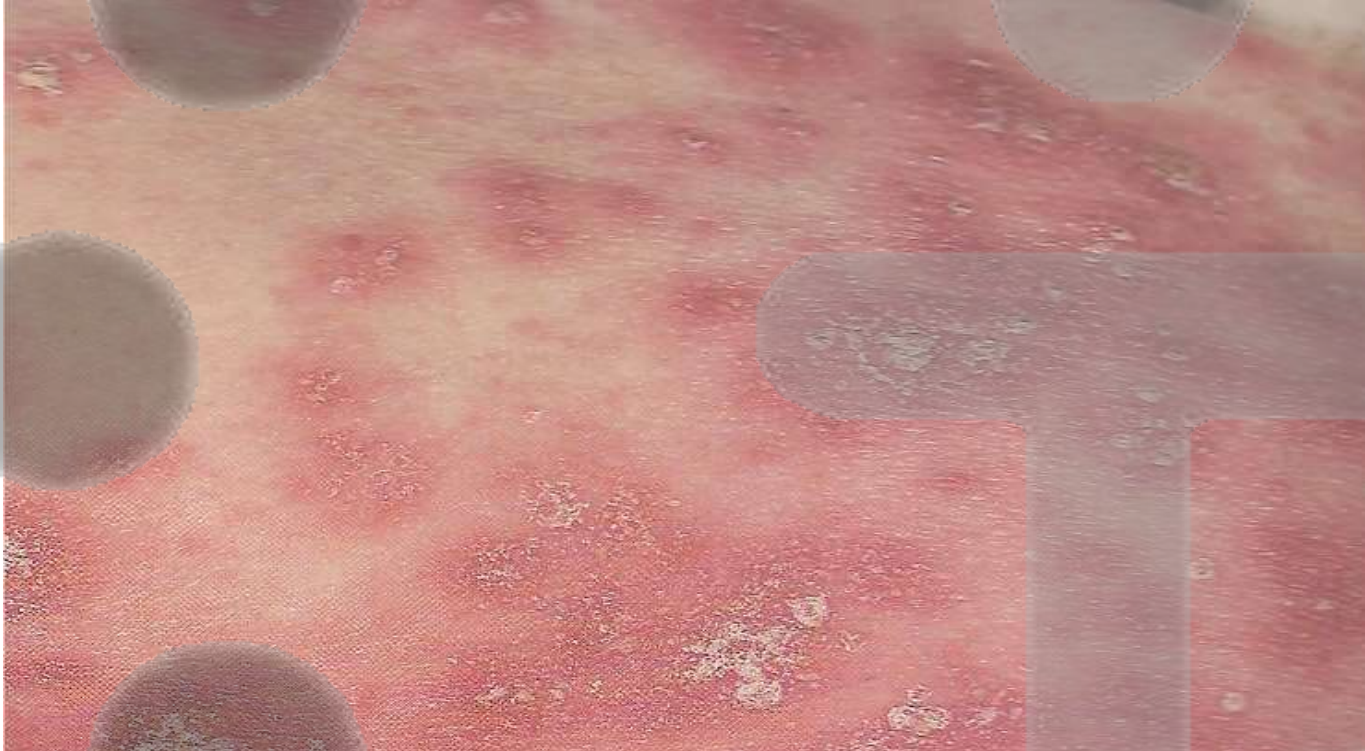
Psoriasis treatment with Electrical Acupuncture



DR. TSUCHIYA HIMSELF



Psoriasis treatment with Electrical Acupuncture



DR. TSUCHIYA HIMSELF



Psoriasis treatment with Electrical Acupuncture



DR. TSUCHIYA HIMSELF



Psoriasis treatment with Electrical Acupuncture



DR. TSUCHIYA HIMSELF



Dr. Tsuchiya and Prof. Maria José





Psoriasis treatment with Electrical Acupuncture

- The Psoriasis treatment has been made in Portugal by PhD. Mitsuharu Tsuchiya and assistant Prof. Maria José Duarte since 1993 until 2010, with the support of Dr. PhD. Maria Luisa Ferro pathologist in St. José's Hospital (Lisbon).
- APAE (Portuguese Association of Electrical Acupuncture), M.D.
- Superior School of Electrical Acupuncture, M.D. only.
- Luso Nippon Integrative Medicine School.
- Tsuchiya Pain Clinic.



Psoriasis treatment with Electrical Acupuncture

- Psoriasis is a chronic inflammatory cutaneous disorder. Recent data indicate that T cells and cytokines are of major importance in the pathophysiology of this frequent immune disease.
- The cutaneous and systemic overexpression of several proinflammatory cytokines, particularly type-1 cytokines such as IL-2, IL-6, IL-8, IL-12, IFN-gamma and TNF-alpha, has been demonstrated. The overexpression of these proinflammatory cytokines is considered to be responsible for initiation, maintenance and recurrence of skin lesions.
- The cellular composition of the inflammatory infiltrate within the plaques as well as the keratinocyte hyperproliferation appears to be directed by cytokines as well.



Psoriasis treatment with Electrical Acupuncture

- Keratinocyte is the predominant cell type in the epidermia, the outermost layer of the human skin constituting 95% of the cells found there.
- The keratinocytes found in the basal layer of the skin are sometimes referred to as "basal cells" or "basal keratinocytes".
- The primary function of keratinocytes is the formation of the keratin layer that protects the skin and the underlying tissue from environmental damage such as heat, UV radiation and water loss.
- This layer is formed through a process called keratinization in which the keratinocytes produce more and more keratin and eventually undergo programmed cell death.
- The fully cornified keratinocytes that form the outermost layer are constantly shed off and replaced by new cells.



Psoriasis treatment with Electrical Acupuncture

- Thus, the overexpression of the chemoattractant IL-8 contributes to the accumulation of granulocytes, a characteristic finding in psoriatic lesions.
- In contrast to the overexpression of proinflammatory cytokines, a relatively low level of expression of the antiinflammatory cytokines IL-1RA and IL-10 has been found, suggesting an insufficient counterregulatory capacity in psoriasis which might have a genetic background.
- The new pathophysiologic understanding of psoriasis offers the opportunity for well-targeted therapeutic interventions which should be more effective and better tolerated than the approaches used thus far. In fact, the cytokine imbalance represents an interesting target.
- This is supported by the therapeutic effects of IL-10, a type-2 cytokine with major influence on immunoregulation, since it inhibits type-1/proinflammatory cytokine formation.



Psoriasis treatment with Electrical Acupuncture

Treatment Method

- The treatment used for Psoriasis was Electrical Acupuncture.
- The intensity level is 200 mA, voltage 6V, frequency 145 Hz, 0.48 ms' (Pica-Pau and Surfing treatment by Dr. Tsuchiya), UV light, and the application of acid water, with low pH (water filter from Photon Enterprise Japan), to clean the affected area.



Psoriasis treatment with Electrical Acupuncture

- In the beginning of the treatment, **Shakketsu** (Japanese term for bloodletting) is made to the patient in the most affected areas.
- Letting out blood is among the oldest of acupuncture techniques that can have effective results. In this particular case the objective was to enhance the production of leukocytes.
- We also inserted needles around the affected areas.



Psoriasis treatment with Electrical Acupuncture

- The high frequency stimulation and the **Shakketsu** method will help to reduce the liberation of cytokines inhibiting the inflammation process and diminishing the proliferation of the keratinocytes.
- As there is also a Stress component involved we used “Pica-Pau and the Surfing techniques” accelerating the noradrenalin liberation at the beginning and in a second phase the production of dopamine. The patient normally finished the treatment with a very big smile.



Psoriasis treatment with Electrical Acupuncture

- The traditional method of treatment through acupuncture is used as in Yukketsu/Bokketsu (Shu/Mu) – BL23/ BL24 and BL25 to reinforce the immune system.
- A diet is also recommended to the patient (avoid consummation of meat, high sugar food and alcohol.) It is highly recommended for patients to consume at least 1.5 L of mineral water, vegetables and fish.
- As a result of this treatment method, patient has shown improvements and felt very pleased for their results.



Psoriasis treatment with Electrical Acupuncture



UV LIGHT APPLICATION



Psoriasis treatment with Electrical Acupuncture



UV LIGHT APPLICATION



Psoriasis treatment with Electrical Acupuncture



PICA-PAU TECHNIQUE



Psoriasis treatment with Electrical Acupuncture



PICA-PAU TECHNIQUE



Psoriasis treatment with Electrical Acupuncture



PICA-PAU TECHNIQUE



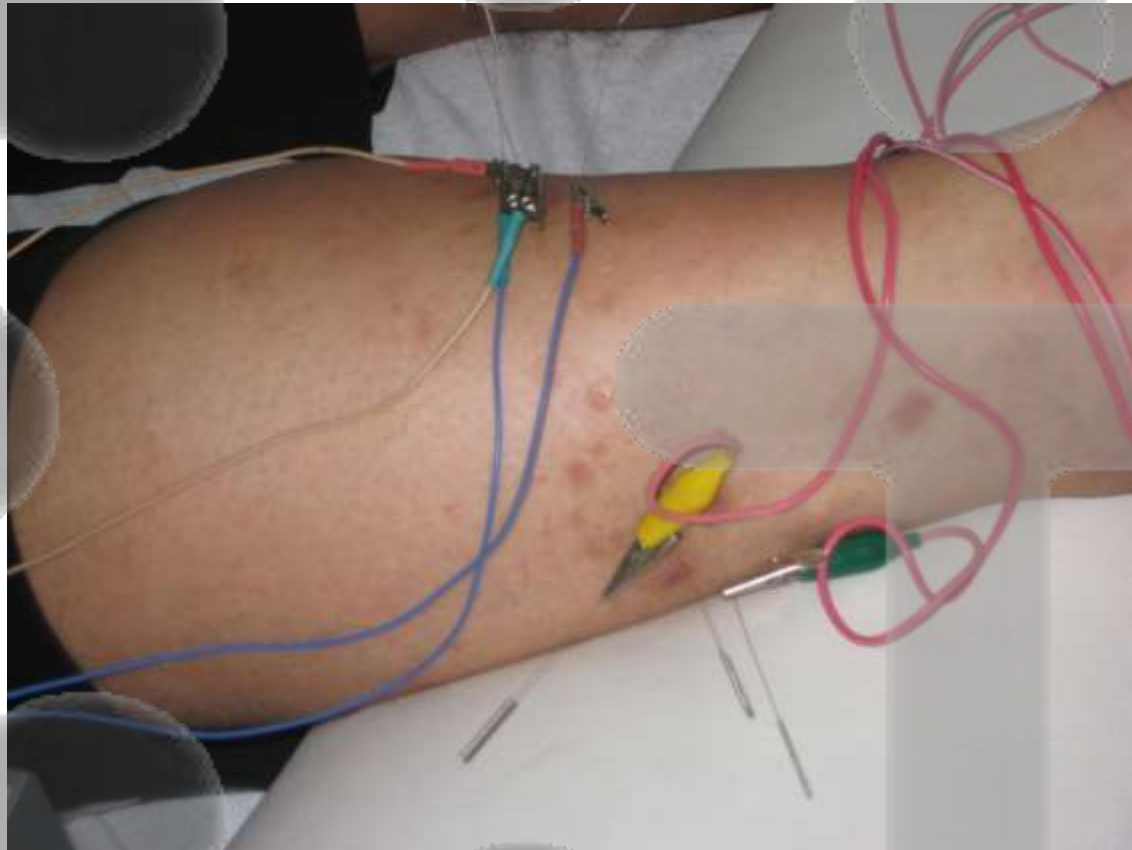
Psoriasis treatment with Electrical Acupuncture



PICA-PAU TECHNIQUE



Psoriasis treatment with Electrical Acupuncture



HIGH-FREQUENCY STIMULATION



Psoriasis treatment with Electrical Acupuncture



HIGH FREQUENCY STIMULATION



Psoriasis treatment with Electrical Acupuncture



SHU-MU SYSTEM



Psoriasis treatment with Electrical Acupuncture



SHAKKETSU



Psoriasis treatment with Electrical Acupuncture



SHAKKETSU



Psoriasis treatment with Electrical Acupuncture



SHAKKETSU



Psoriasis treatment with Electrical Acupuncture



ACID WATER APPLICATION



Psoriasis treatment with Electrical Acupuncture

- **PHOTON WATER IONIZER** produces filtered and alkalized water.
Using electrical energy, it performs electrolysis through titanium electrodes connected by platinum within a water cell. In this advanced cell, the electrical energy converts the ordinary running water into alkaline (high pH) and acid (low pH) without using any type of chemical. Ionizing the water in this way, reconstructs the molecules and reduces their size so that minerals, such as calcium, magnesium and potassium, become more absorbable. The ionizer also produces acid water. This type of water has a low pH, less than a pH6 and has excellent uses.
- **APPLICATIONS:**
 - Alkaline water:**
The drinking of alkaline water at its lowest levels of pH is recommended and the high levels are excellent to make infusions and for cooking
 - Acid water:**
Is not apt for consumption but can be used for washing your teeth or face at low levels of acidity.
The water with high levels of acid should only be used for disinfecting objects.
 - Purified water:**
Is not ionised but has been filtered by the Photon Filter.
It is recommended, for example, for taking medicines and to prepare the babies bottle.





Psoriasis treatment with Electrical Acupuncture



DURING TREATMENT



Psoriasis treatment with Electrical Acupuncture



AFTER 15 TREATMENTS (TWICE A WEEK)



Psoriasis treatment with Electrical Acupuncture



AFTER 20 TREATMENTS (TWICE A WEEK)



Psoriasis treatment with Electrical Acupuncture Results

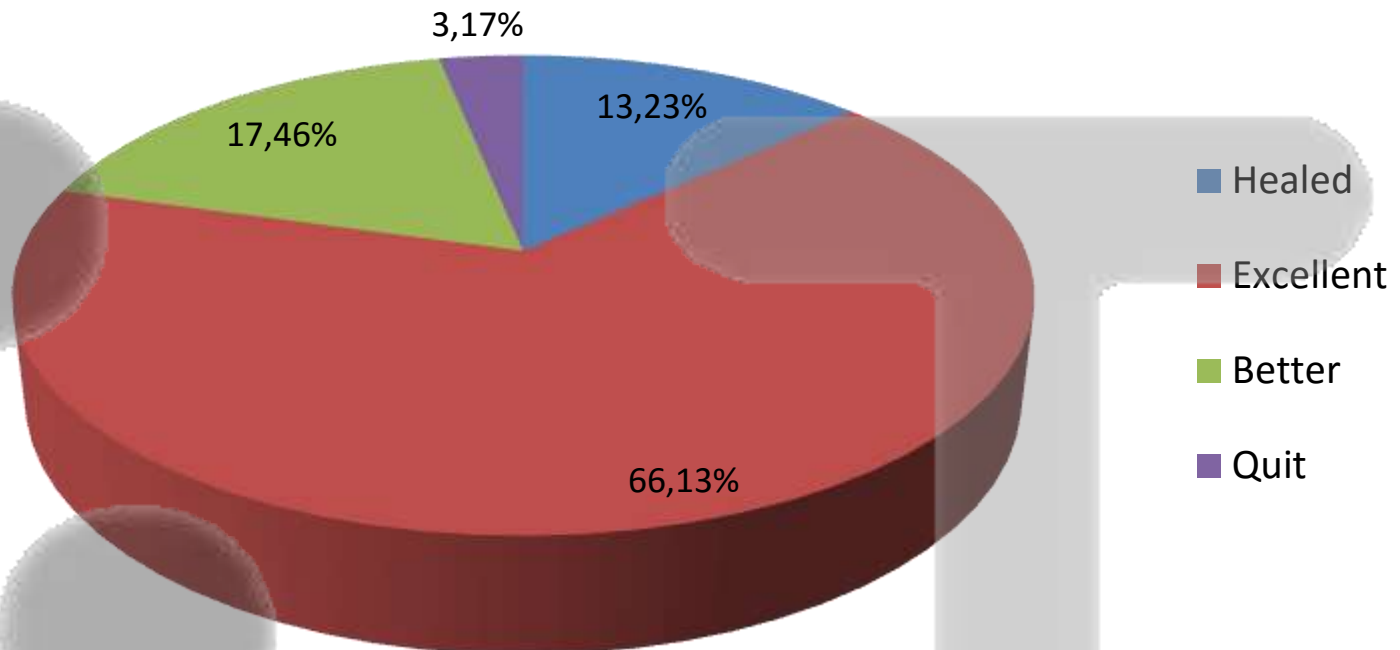
Results

- The total amount of people which made electric acupuncture treatment to Psoriasis, since 1993, was 189. Universe 189 = 100%. Values in %.



Psoriasis treatment with Electrical Acupuncture Results

Statistics Results





Psoriasis treatment with Electrical Acupuncture

Conclusion

- We still can't understand a lot of things but APAE, M.D. group is investigating. We are able to understand the electric acupuncture and its effectiveness in the Psoriasis treatment.